

87%

0.95

IP67

Class 2 & SELV

EUV-036SxxxST

90 ~ 305 Vac



Vdc	Vac	mA	W	%	PF		Model
					0.96	0.95	
24 Vdc	90 ~ 305 Vac	0 ~ 1500 mA	36 W	85%	0.96	0.95	EUV-036S024ST <sup>(3)</sup>
36 Vdc	90 ~ 305 Vac	0 ~ 1000 mA	36 W	86%	0.96	0.95	EUV-036S036ST <sup>(4)</sup>
48 Vdc	90 ~ 305 Vac	0 ~ 750 mA	36 W	87%	0.96	0.95	EUV-036S048ST <sup>(5)</sup>

- 1 UL, FCC    100-277Vac;    UL, FCC    100-240Vac
- 2    220Vac    100%
- 3 Class 2    &
- 4 Class 2    ,    Class 2
- 5 Class 2    ,    Class 2

	V		Hz	MIU	mA	A	Vac	%
	90 V	-	305 V					
	47 Hz	-	63 Hz					
	-	-	0.75 MIU	UL8750; 277Vac/ 60Hz				
	-	-	0.75 mA	IEC60598-1; 240Vac/ 60Hz				
	-	-	0.6 A	100Vac    100%				
	-	-	0.3 A	220Vac    100%				

	-	-	60 A	220Vac 25 10% -
$I^2t$	-	-	$0.2 A^2s$	= 210 $\mu S$
	0.90	-	-	100- 277Vac 75%~ 100%
	-	-	20%	

	-5%Vo	-	5%Vo	
Vo = 24 V	-	-	28V	
Vo = 36 V	-	-	40V	
Vo = 48 V	-	-	52V	

(pk-pk)

Vo = 24 V  
 Vo = 36 V  
 Vo = 28V

@ 277Vac: Vo = 24 V Vo = 36 V Vo = 48 V	84% 85% 86%	85% 86% 87%	- - -	100% 25
	-	-	6 W	
	371,000 hours	-	-	120Vac , 25 ,80% (MIL-HDBK-217F)
	-	111,700 Hours	-	120Vac , 80% 60
	-40 C	-	+90 C	
	-40 C	-	+70 C	: 10% RH to 100% RH
	-40 C	-	+85 C	: 5% RH to 100% RH
(L x W x H) (L x W x H)	6.77 x 1.77 x 1.38 172 x 45.0 x 35.0		7.60 x 1.77 x 1.38 193 x 45.0 x 35.0	
	-	520 g	-	

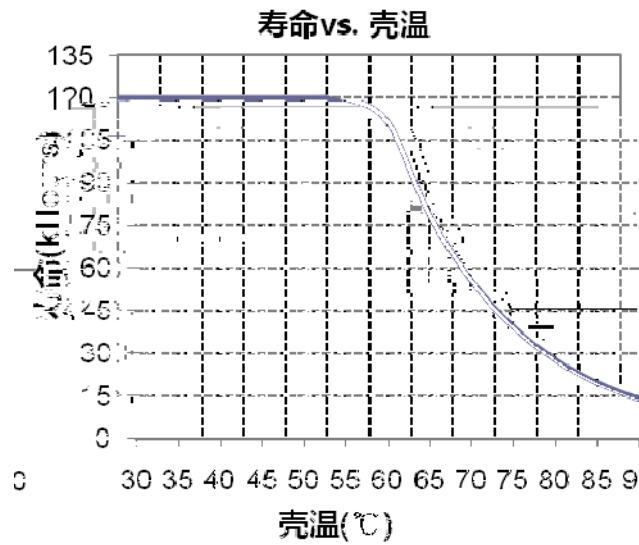
25 C

UL/CUL	UL8750, UL1012, UL1310 Class 2, CSA-C22.2 No. 107.1, CSA C22.2 NO. 223-M91 Class 2
CE	EN 61347-1, EN61347-2-13

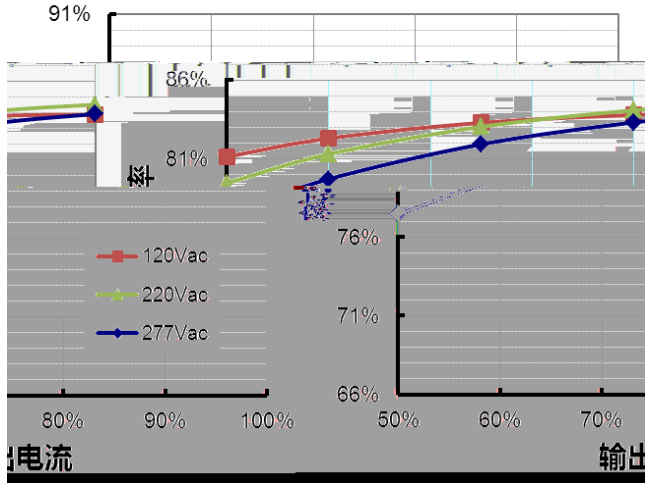
EMS	
EN 61000-4-2	Electrostatic Discharge (ESD): 8 kV air discharge, 4 kV contact discharge
EN 61000-4-3	Radio-Frequency Electromagnetic Field Susceptibility Test-RS
EN 61000-4-4	Electrical Fast Transient / Burst-EFT
EN 61000-4-5	Surge Immunity Test: AC Power Line: line to line 4 kV, line to earth 6 kV
EN 61000-4-6	Conducted Radio Frequency Disturbances Test-CS
EN 61000-4-8	Power Frequency Magnetic Field Test
EN 61000-4-11	Voltage Dips
EN 61547	Electromagnetic Immunity Requirements Applies To Lighting Equipment

1 EMI

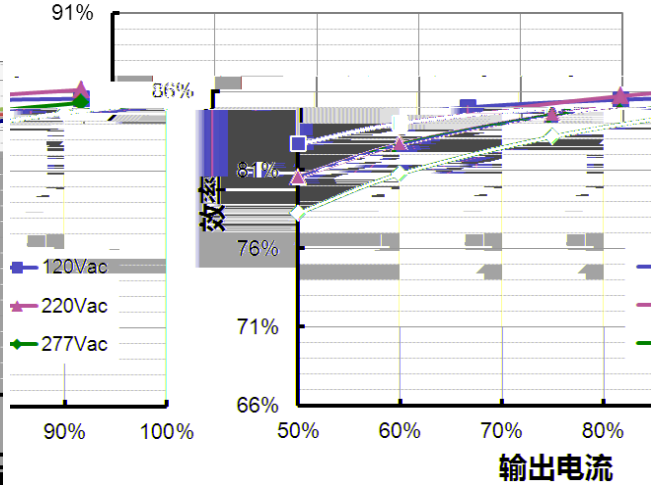
( ) EMI



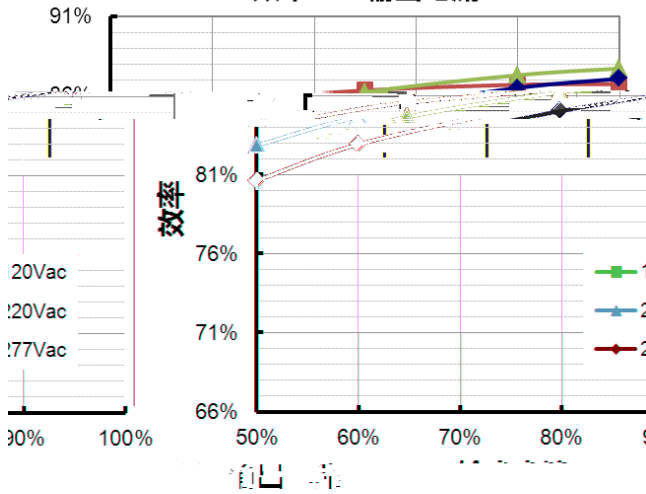
**EUV-036S024ST**  
效率 vs. 输出电流

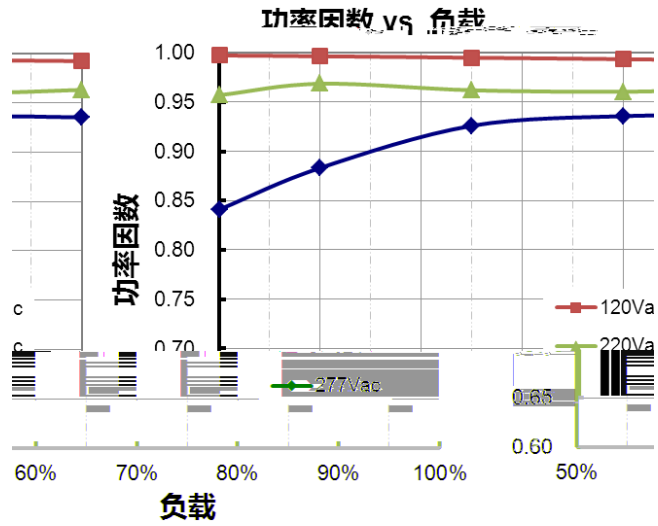


**EUV-036S036ST**  
效率 vs. 输出电流

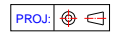
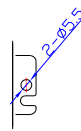
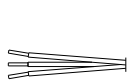
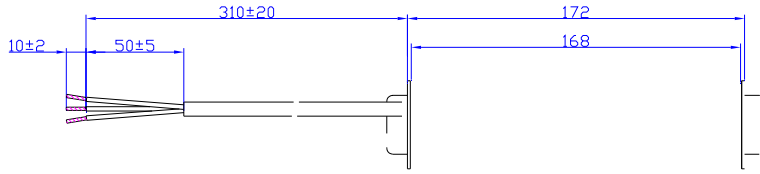


**EUV-036S048ST**  
效率 vs. 输出电流





	1.1 lo	1.4 lo	1.70 lo	



:  $\pm 1$

2012-04-24	A		/	/
2012-05-25	B		/	/
2012-06-06	C		/	
			/	
2012-07-03	D		/	
2012-7-12	E		/	
2012-7-30	F		-35	-40
2012-8-21	G		/	
		I <sup>2</sup> t	/	
			/	
		PF	/	
2012-11-27	H		Min 50,000hrs	Typical 111,700hrs
			/	
			/	
2017-04-05	I	@ 277Vac	/	
			/	
			/	
		KS	/	
		EMI	/	
			/	
			/	
		(L x W x H)	172 x 42.4 x 34.0	172 x 45.0 x 35.0
			480 g	520 g
		-	/	
	/			