

-
-
-
-
-
-
-



W

| 12 Vdc | 90 ~ 305 Vac | 0~3500 mA | 42 W | 84% | 0.96 | 0.95 | EUV-042S012PS ⁽³⁾ |
|--------|--------------|-----------|------|-----|------|------|------------------------------|
| 24 Vdc | 90 ~ 305 Vac | 0~1750 mA | 42 W | 86% | 0.96 | 0.95 | EUV-042S024PS ⁽³⁾ |
| 36 Vdc | 90 ~ 305 Vac | 0~1160 mA | 42 W | 87% | 0.96 | 0.95 | EUV-042S036PS ⁽³⁾ |
| 48 Vdc | 90 ~ 305 Vac | 0~875 mA | 42 W | 89% | 0.96 | 0.95 | EUV-042S048PS ⁽⁴⁾ |

100

全

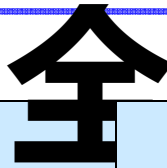
| | | | | IEC60598-1; 240Vac/ 60Hz |
|--|---|---|-----------------------|--------------------------|
| | - | - | 0.6 A | |
| | - | - | 0.3 A | |
| | - | - | 70 A | |
| | - | - | 0.16 A ² s | |

全

| | | | |
|--|--|--|--|
| | | | |
| | | | |
| | | | |

全

| | | | |
|-----------|-------|---|-------|
| | | | |
| | -5%Vo | | 5%Vo |
| Vo = 12 V | - | - | 3 V |
| Vo = 24 V | - | - | 4 V |
| Vo = 36 V | - | - | 4 V |
| Vo = 48 V | - | - | 4 V |
| Vo = 12 V | - | - | 16 V |
| Vo = 24 V | - | - | 28 V |
| Vo = 36 V | - | - | 40 V |
| Vo = 48 V | - | - | 52 V |
| | | | 10%Vo |
| | - | - | ±2% |

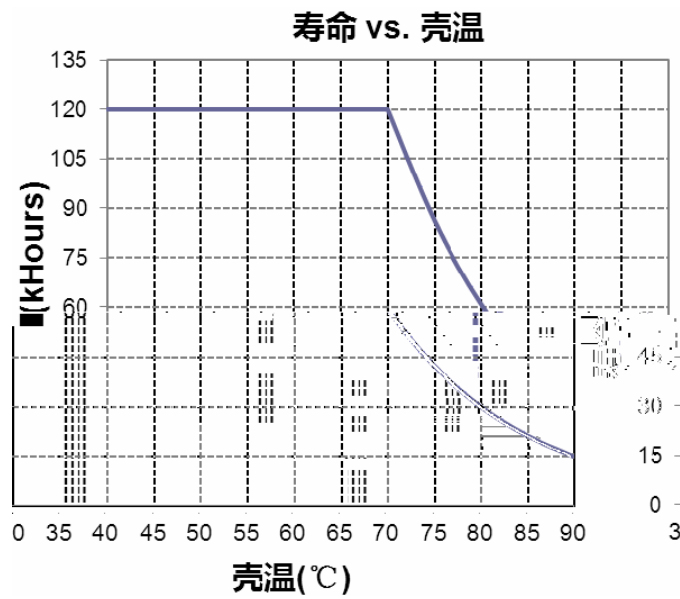


| | | | | |
|--|------------------------------------|---------------|-----|--|
| | | | | |
| | 327,000 hours | - | - | |
| | - | 116,000 Hours | - | |
| | | - | +90 | |
| | | | +70 | |
| | | | +85 | |
| | 3.74 × 2.76 × 1.26 95 × 70 × 32 | | | |
| | | | | |

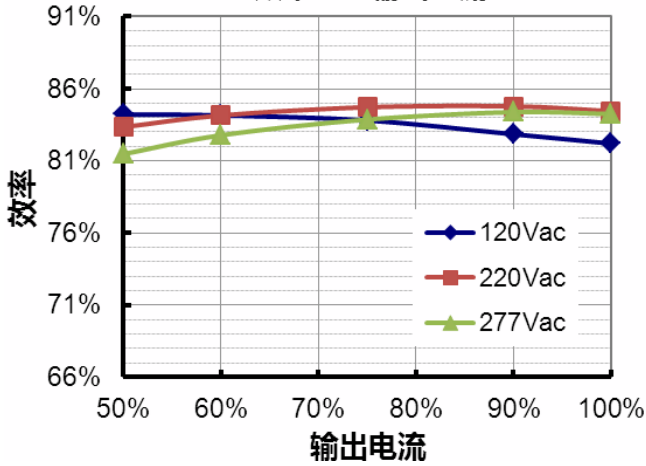
o

| | |
|----------------------------|---|
| | |
| UL/CUL | UL8750, UL 1310, CAN/CSA-C22.2 No. 250.13, CAN/CSA-C22.2 No. 223-M91 |
| CE | EN 61347-1, EN61347-2-13 |
| KS | KS C 7655 |
| | |
| EN 55015 ⁽¹⁾ | Conducted Emission Test & Radiated Emission Test |
| EN 61000-3-2 | Harmonic current emissions |
| EN 61000-3-3 | Voltage fluctuations & flicker |
| FCC Part 15 ⁽¹⁾ | ANSI C63.4 Class B |
| | This device complies with Part 15 of the FCC Rules. Operation is subject to the following two conditions: [1] this device may not cause harmful interference, and [2] this device must accept any interference received, including interference that may cause undesired operation. |
| EMS | |
| EN 61000-4-2 | Electrostatic Discharge (ESD): 8 kV air discharge, 4 kV contact discharge |
| EN 61000-4-3 | Radio-Frequency Electromagnetic Field Susceptibility Test-RS |

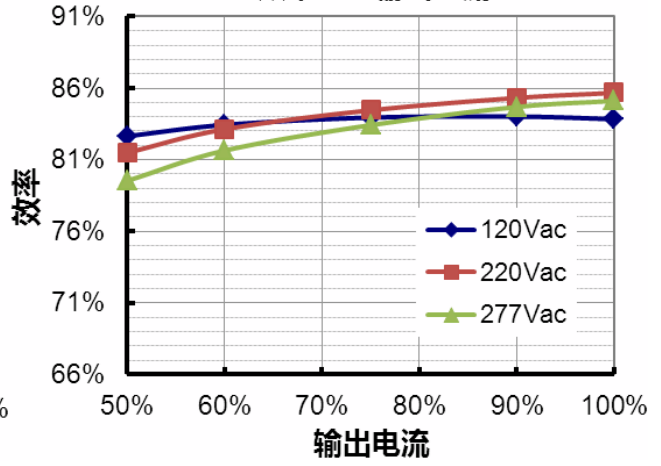
| EMS | |
|---------------|---|
| EN 61000-4-4 | Electrical Fast Transient / Burst-EFT |
| EN 61000-4-5 | Surge Immunity Test: AC Power Line: Differential Mode 2 kV |
| EN 61000-4-6 | Conducted Radio Frequency Disturbances Test-CS |
| EN 61000-4-8 | Power Frequency Magnetic Field Test |
| EN 61000-4-11 | Voltage Dips |
| EN 61547 | Electromagnetic Immunity Requirements Applies To Lighting Equipment |



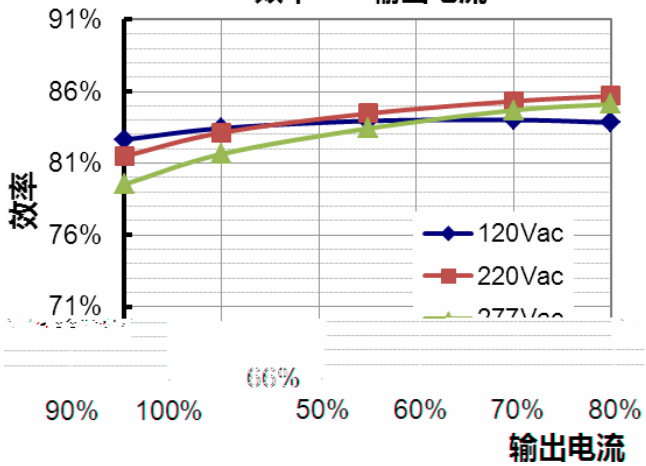
EUV-042S012PS
效率 vs. 输出电流



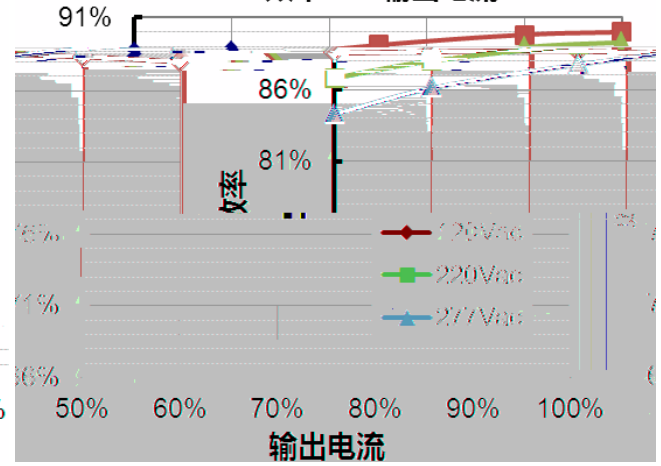
EUV-042S024PS
效率 vs. 输出电流

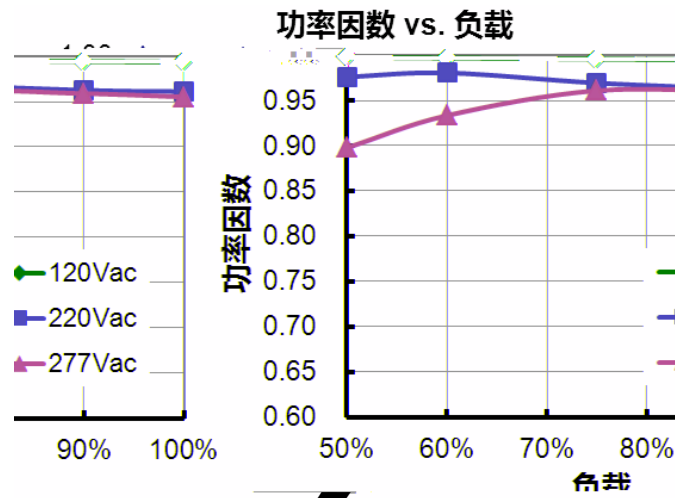


EUV-042S036PS
效率 vs. 输出电流



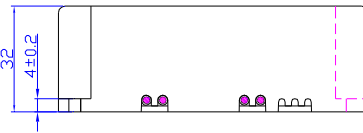
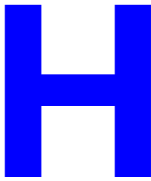
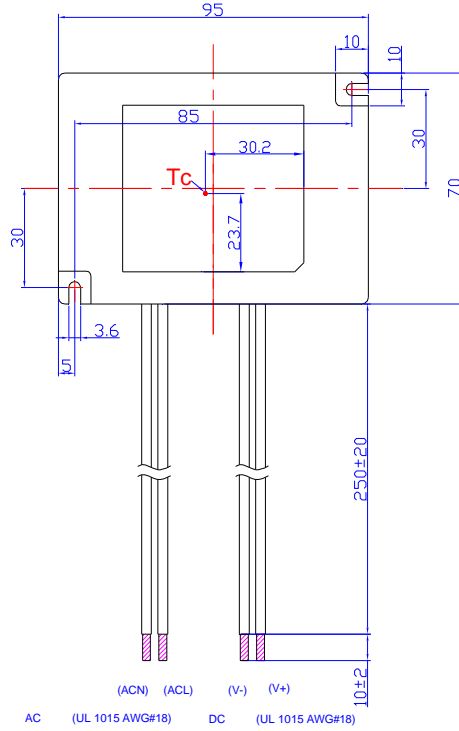
EUV-042S048PS
效率 vs. 输出电流





全

| | | | | |
|--|--------|--------|--------|--|
| | | | | |
| | 1.1 lo | 1.4 lo | 1.7 lo | |
| | | | | |
| | | | | |



PROJ  

:±1

| | | | Min 50,000hrs | Typical 116,000hrs |
|--|--|------|---------------|--------------------|
| | | | | |
| | | | | |
| | | | 1.0 s | =0.75 s |
| | | | | |
| | | | 350 g | 390 g |
| | | | | |
| | | | | |
| | | | | |
| | | | 50-60Hz | |
| | | | UL/CUL | |
| | | | KS | |
| | | | FCC | |
| | | | EN 61000-4-4 | |
| | | | EN 61000-4-5 | |
| | | | | |
| | | RoHS | | |